

# MAÇÃ D'ADÃO

Jonas



## TECHNICAL RIDER

# SCENIC SPACE AND SCENOGRAPHY

Stage with black wooden floor;

Sides and back of stage with “Italian style” or “German box” panelling, depending on the size of the stage (to be agreed with technical teams), with black flannel curtains;

Minimum stage dimensions:

Length (stage mouth) > 8m

Depth > 6m

Height (poles) > 7m

If possible, the show starts with the curtain closed. It should open/close in a horizontal movement and with time adjustment.

The scenery for the show consists of:

- two palm trees on either side of the stage suspended from the rods of the web
- wooden letters “J - O - N - A - S” suspended from a web pole
- a fireplace
- lines on the stage created with white linoleum tape.

The letters are made of wood, with LED strips around them, connected to a dimmer circuit. The fireplace contains LED strips and a smoke machine, so it needs a dimmer channel, a power point and DMX.

All the materials used to hang the scenery are supplied by the show's production.

During certain moments in the performance, the palm trees must shake. The movement is created by pulling on their suspension rod.

## **Set-up plan and local team required:**

- 5 work shifts + 1 shift for presentation (2 days)
- 2 light technicians, 2 sound technicians and 1 conductor (minimum).

Please note: previous set-up is essential.

## **Requested resources from the host organization:**

- 1 black rope measuring 7m;
- Intercom
- Backstage lights (for passages)
- 2 weights of at least 10kg each
- Scaffolding or Genie to set up the set

# BACKSTAGE

## Dressing rooms:

- 4 dressing rooms: 1 large one, ideally at stage level, and 3 dressing rooms for 3 people each;
- At least 20 hangers with trouser holders are needed;
- Internet (Wi-Fi) available;
- Catering is requested for the rehearsal day and the day(s) of the show (tea, coffee, nuts, chocolate, cookies, fruit, etc.), and bottles of water.

# LIGHT

## Equipment required:

6 x Spot CMY  
6 x Wah Led RGBW  
16 x Par Led  
4 x Fresnel 1kW  
11 x PC 1kW  
1 x PC2kw  
12 x Cyc  
2 x Par64 (SAFEX)  
1 x Grand MA2  
1 x Mini Smoke (Jonas)

Note: “Base” light design sent in attachment.

# FINAL NOTES

If you need to make any changes to the rider, please contact the technical director.  
Thank you for respecting this rider and the Maça d'Adão show!

## Maça d'Adão Team

Rui Daniel | adaptation and light operation | +351 912 046 354 | [rd@512livedesign.com](mailto:rd@512livedesign.com)  
Filipe Peres | sound operation | +351 919 999 143 | [filipepperes@hotmail.com](mailto:filipepperes@hotmail.com)  
Nuno Eusébio | production director | +351 918 069 872 | [nunoeusebio@jonaslander.com](mailto:nunoeusebio@jonaslander.com)  
Sara Alexandra | executive producer | +351 911 034 013 | [saraalexandra@jonaslander.com](mailto:saraalexandra@jonaslander.com)  
Jonas and Lander | artistic director | [sinistra@jonaslander.com](mailto:sinistra@jonaslander.com)

## SOM / F.O.H

### P.A.

O sistema deverá estar instalado, em fase e 100% operacional.

Deverá ter um mínimo de 3 vias, com dimensão adequada ao recinto, capaz de reproduzir uma leitura de 110dB SPL(A), na posição da mesa de mistura FOH e com uma distribuição uniforme pelo espaço, com recurso a Subwoofer, front fills e torres de delay, se necessário.

### F.O.H

A mesa de mistura tem de estar em perfeitas condições, sem nenhum tipo de ruído, mínimo(livre) 32 canais na mesa.

A mesa deverá ficar posicionada no centro do espaço a sonorizar, formando um triângulo equilátero com o PA.

A gestão do P.A deverá estar dividido por matrizes, os SUB's em auxiliar pos-fader e sistema Surround em formato L – R.

**Preferências:** Yamaha: PM Rivage Series, CL5; Soundcraft: Serie Vi (3000, 5000 ou 7000)

## SOM / PALCO

### MONITORES

São necessários 8 Top's iguais (mínimo 12"), para posicionar 2 top's de side fill e 6 em posição monitor.

Em tripés escuros e com altura até 1,80m.

A monição é feita pela mesa FOH.

### SISTEMA IEM

- 5 x SHURE PSM 1000 ou SENNHEISER EW IEM G4

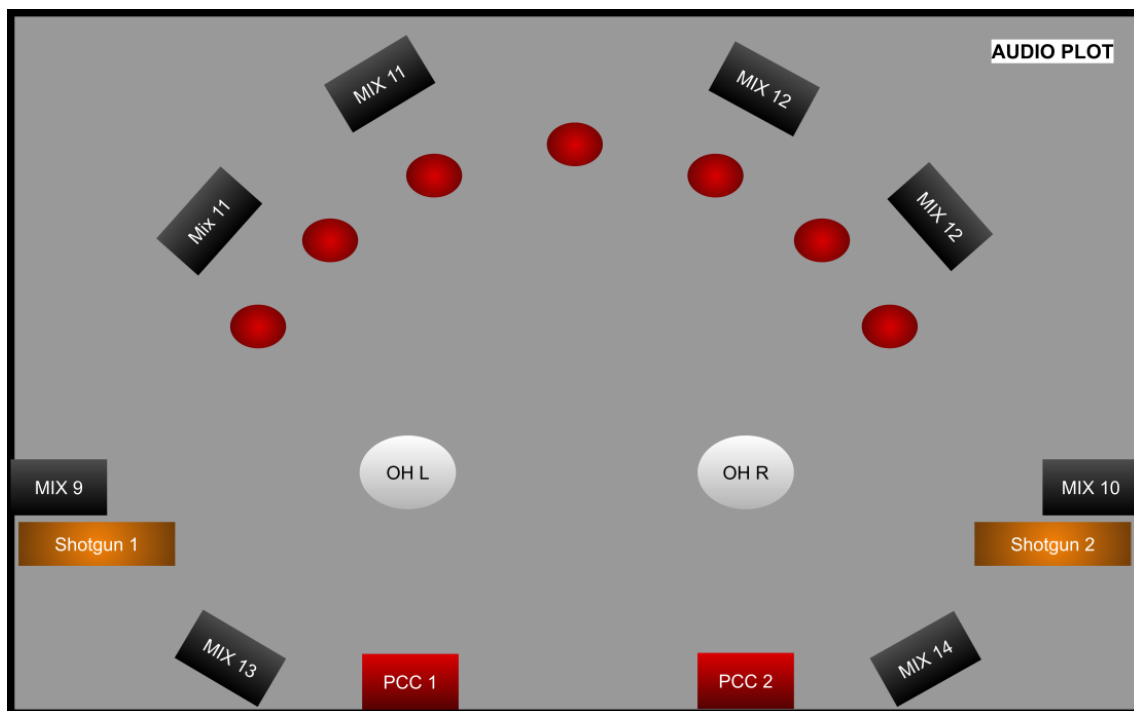
### SISTEMA WIRELESS

- 16 x SHURE ULX-D ou superior (frequências 470 – 600MHZ);
- 14 x Bodypack Transmitter (frequências 470 – 600MHZ);
- 7 x adaptadores Jack compatíveis com o sistema wireless. (Ref. WA304)

CH	INSTRUMENTO	MIC/DI	TRIPÉ	WIRELESS
1	GTR PORTUGUESA	Adaptador Jack – Emissor Wireless		RF 1
2	GTR PORTUGUESA	Adaptador Jack - Emissor Wireless		RF 2
3	VIOLA FADO	Adaptador Jack - Emissor Wireless		RF 3
4	BAIXO	Adaptador Jack - Emissor Wireless		RF 4
5	ADUFE	DPA 4099 – Emissor Wireless		RF 5
6	CAVAQUINHO 1	Adaptador Jack - Emissor Wireless		RF 6
7	CAVAQUINHO 2	Adaptador Jack - Emissor Wireless		RF 7
8	JONAS	SM 86/KSM8 – Emissor Wireless	BOOM	RF 8
9	VOZ BERNARDO	DPA 4088 Bege		RF 9
10	VOZ HELDER	DPA 4088 Bege		RF 10
11	VOZ TIAGO	DPA 4088 Bege		RF 11
12	VOZ YAMI	DPA 4088 Bege		RF 12
13	VOZ LANDER	DPA 4088 Bege		RF 13
14	VOZ LEWIS	DPA 4088 Bege		RF 14
15	SPARE ADAP. JACK/VOZES	Adaptador Jack e DPA 4088 Bege		RF 15
16	SPARE JONAS	SM 86/KSM8 – Emissor Wireless	SMALL	RF 16
17	OH SUB PALCO L	KM 184	BOOM	
18	OH SUB PALCO R	KM 184	BOOM	
19	SAPATEADO L	CROWN PCC 160		
20	SAPATEADO R	CROWN PCC 160		
21	SHOTGUN L	Sennheiser MKH 416	SMALL	
22	SHOTGUN R	Sennheiser MKH 416	SMALL	
23/24	IPOD ON STAGE	2 X DI/MINI JACK		
FOH	LAPTOP	2 X DI/MINI JACK		
FOH	TALKBACK	SM58		

## OUTPUT MIXING:

- MIX 1: IEM GP 1 L
- MIX 2: IEM GP 1 R
- MIX 3: IEM GP 2 L
- MIX 4: IEM GP 2 R
- MIX 5: IEM VIOLA L
- MIX 6: IEM VIOLA R
- MIX 7: IEM BAIXO L
- MIX 8: IEM BAIXO R
- MIX 9: SIDE FILL L
- MIX 10: SIDE FILL R
- MIX 11: 2 X MONITOR REAR L
- MIX 12: 2 X MONITOR REAR R
- MIX 13: FRONT MONITOR L
- MIX 14: FRONT MONITOR R
- MIX 15: SURROUND L
- MIX 16: SURROUND R
- MIX 17: SUB L
- MIX 18: SUB R
- MIX 19: GROUP MIC'S L
- MIX 20: GROUP MIC'S R
- MIX 21: GROUP SHOTGUNS L
- MIX 22: GROUP SHOTGUNS R





NOTAS ILUMINAÇÃO:

- 1x Canail dimmer para Letras LED (Vara Lettring)
- 1x Cannal Dimmer para Fita Led (no meio de cena)
- 1x Ponto corrente + DMX (máquina de fumo meio de cena)

CENA:

- Panejamento Negro á Italiana

EQUIPAMENTO FORNECIDO PELA EQUIPA JONAS:

- Letring em Madeira com controno LEd 220v
- Mini Maquina de Fumo
- Fita Led Neon 220v

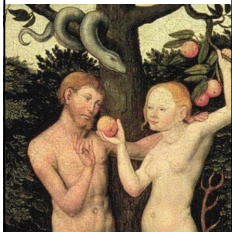
*We are fully available to assist you in the production of your event. If you need to change any aspect of this rider please do not hesitate to contact the Lighting Director.*

*We will certainly find a solution.*

*Thank you for respecting this rider and our show.*



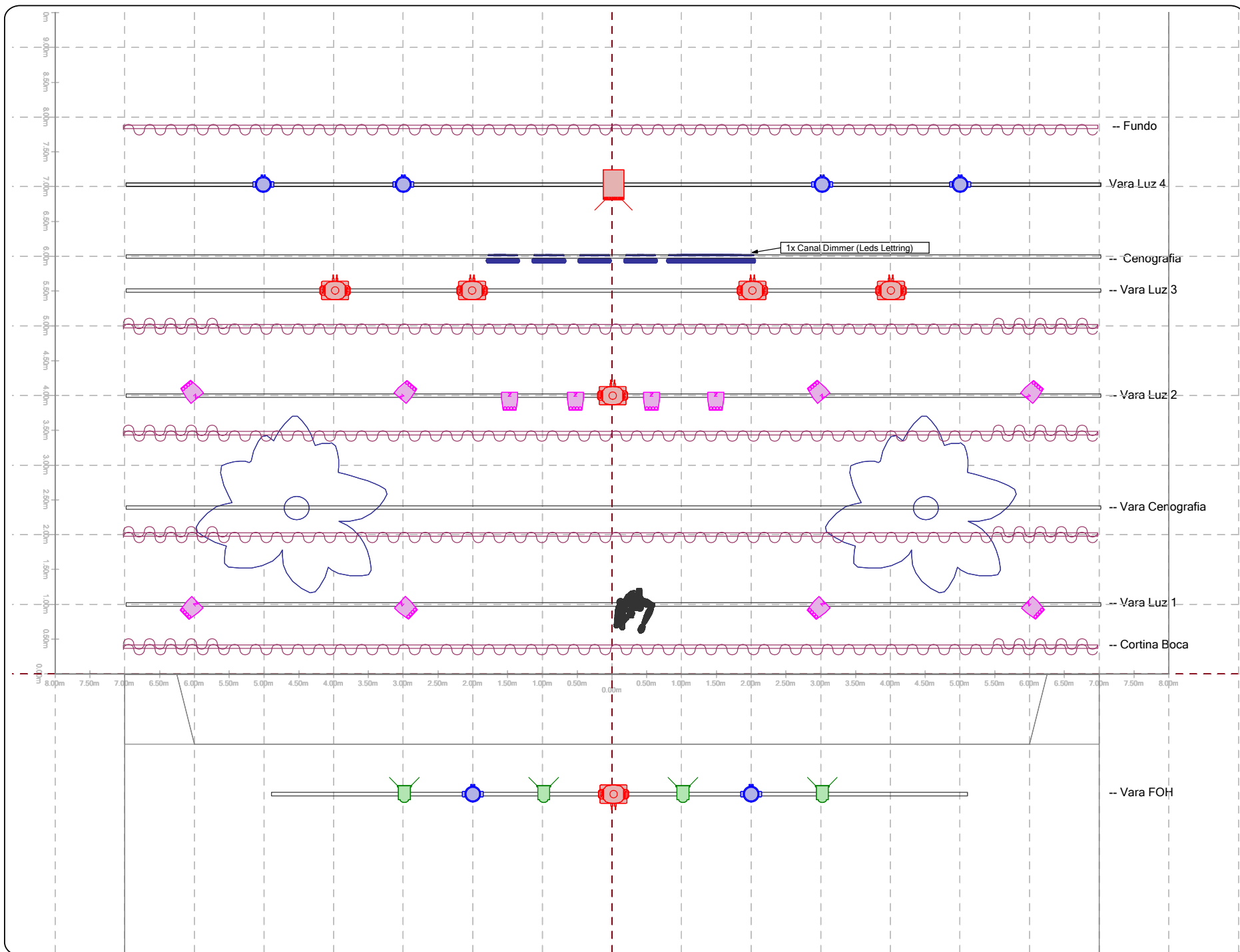
L I V E D E S I G N



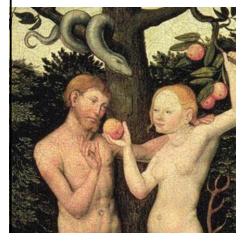
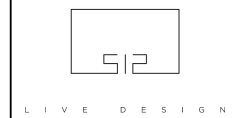
This drawing represents only the visual concept and a suggestion of construction. It does not replace the knowledge and advice of an engineer or technician in the area of rigging. LD is not qualified to determine the structural validity of this project, so it will not assume any responsibility for its incorrect implementation.

Maçã de Adão


BASE		
Lighting Design	Rui Daniel +351 912 046 354 rd@512livedesign.com	
Executive Director	Inês Le Gué +351 928 158 327 inesleque@jonaslender.com	
WYG	Show Date	Print Date
RD	2024	07/Feb/24
Scale	Version	
1:40	MacaDeAdao 2024 v3	
1 of 5	Plot	
NOTES		
copyright © 2024 All rights reserved. This rider or part of it may not be reproduced or used without prior authorization from the LD.		



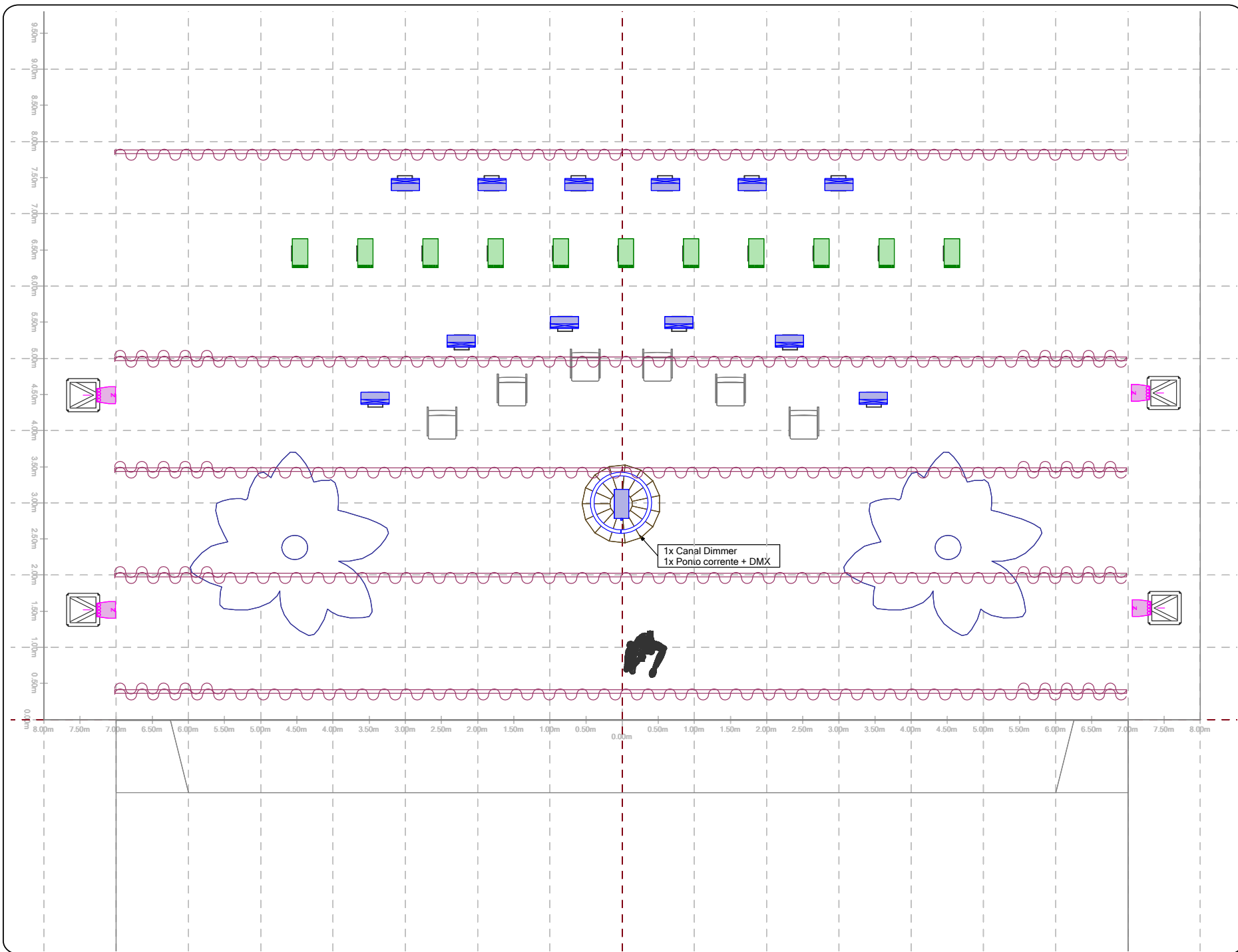
	Spot CMY	6
	Wah Led RGBW	6
	Par Led	16
	Fresnel 1kW	4
	PC 1kW	11
	PC2kw	1
	Cyc	12
	Par64 (SAFEX)	2
	MA2	1
	Mini Smoke (Jonas)	1



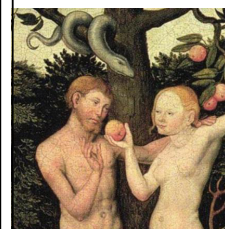
his drawing represents only the visual concept and a suggestion of construction. It does not replace the knowledge and advice of an engineer or technician in the area of rigging. LD is not qualified to determine the structural validity of this project, so it will not assume any responsibility for its incorrect implementation.

Maçã de Adão		
BASE		
Rui Daniel		
Lighting Design	+351 912 046 354 rd@512livedesign.com	
Executive Director		
Inês Le Gué		
Production Manager	+351 928 158 327 inesleque@jonaslander.com	
		
WYG	Show Date	Print Date
RD	2024	07/Feb/24
Scale	Version	
1:40	MacaDeAdao 2024 v3	
2 of 5	Plot	
VOADO		
copyright © 2024 All rights reserved. This rider or part of it may not be reproduced or used without prior authorization from the LD.		





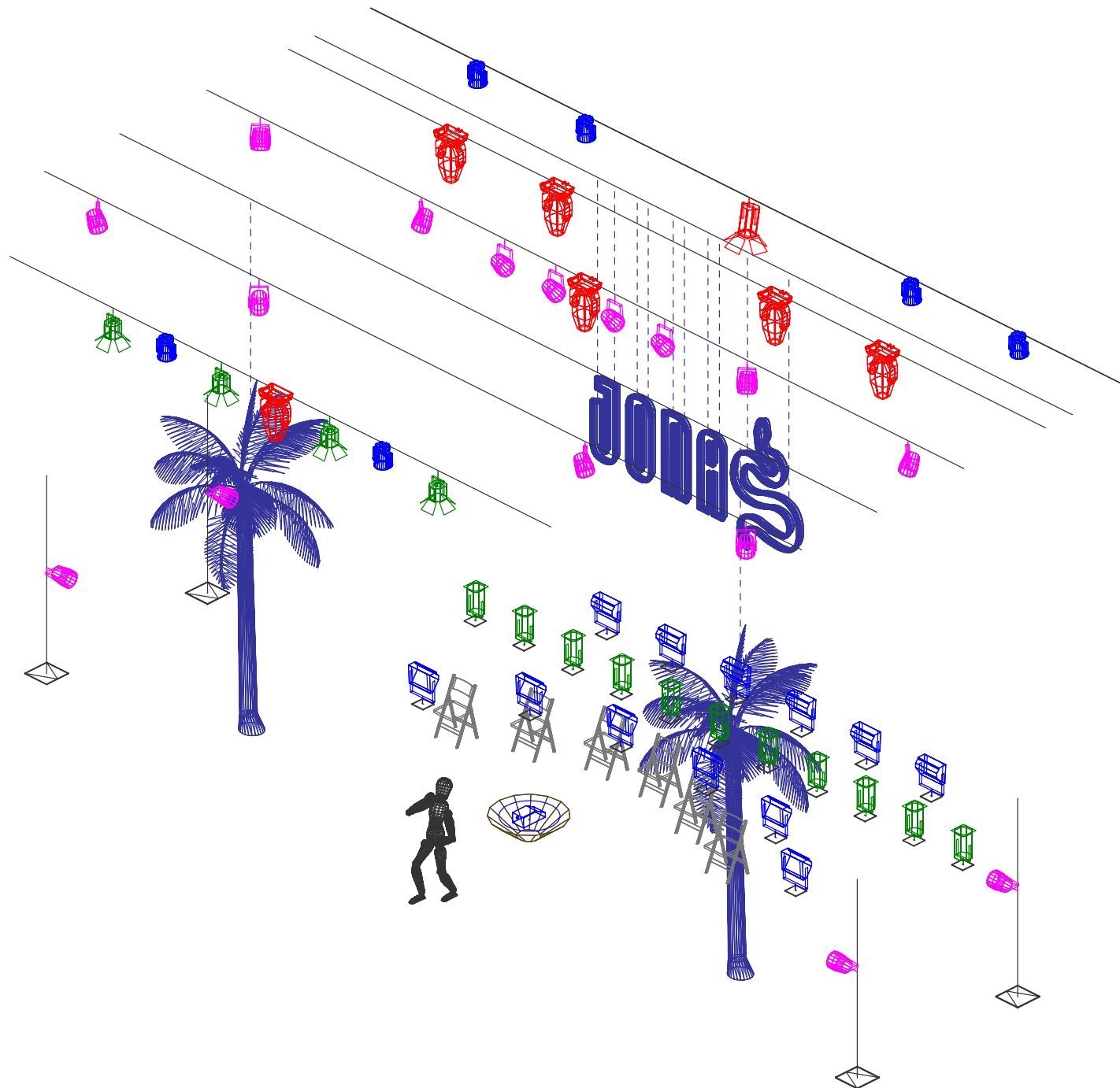
- Spot CMY 6
- Wah Led RGBW 6
- Par Led 16
- Fresnel 1kW 4
- PC 1kW 11
- PC2kw 1
- Cyc 12
- Par64 (SAFEX) 2
- MA2 1
- Mini Smoke (Jonas) 1



his drawing represents only the visual concept and a suggestion of construction. It does not replace the knowledge and advice of an engineer or technician in the area of rigging. LD is not qualified to determine the structural validity of this project, so it will not assume any responsibility for its incorrect implementation.

## Maçã de Adão

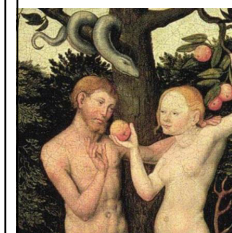
BASE		
Rui Daniel		
Lighting Design	+351 912 046 354 rd@512livedesign.com	
Executive Director		
Inês Le Gué		
roduction Manager	+351 928 158 327 inesleque@jonaslander.com	
		
WYG	Show Date	Print Date
RD	2024	07/Feb/24
Scale	Version	
1:40	MacaDeAdao 2024 v3	
Plot		CHÃO
3 of 5		
copyright © 2024 All rights reserved. This rider or part of it may not be reproduced or used without prior authorization from the LD.		



	Spot CMY	6
	Wah Led RGBW	6
	Par Led	16
	Fresnel 1kW	4
	PC 1kW	11
	PC2kW	1
	Cyc	12
	Par64 (SAFEX)	2
	MA2	1
	Mini Smoke (Jonas)	1





L I V E   D E S I G N



This drawing represents only the visual concept and a suggestion of construction. It does not replace the knowledge and advice of an engineer or technician in the area of rigging. LD is not qualified to determine the structural validity of this project, so it will not assume any responsibility for its incorrect implementation.

## Maça de Adão

BASE		
Rui Daniel		
Lighting Design	+351 912 046 354 rd@512livedesign.com	
Executive Director		
Inês Le Gué		
Production Manager	+351 928 158 327 inesleque@jonaslender.com	
		
WVG	Show Date	Print Date
RD	2024	07/Feb/24
Scale	Version	
1:40	MacaDeAdao 2024 v3	
	Plot	
ISO		
copyright © 2024 All rights reserved. This rider or part of it may not be reproduced or used without prior authorization from the LD.		



	Spot CMY	6
	Wah Led RGBW	6
	Par Led	16
	Fresnel 1kW	4
	PC 1kW	11
	PC2kW	1
	Cyc	12
	Par64 (SAFEX)	2
	MA2	1
	Mini Smoke (Jonas)	1




L I V E   D E S I G N



This drawing represents only the visual concept and a suggestion of construction. It does not replace the knowledge and advice of an engineer or technician in the area of rigging. LD is not qualified to determine the structural validity of this project, so it will not assume any responsibility for its incorrect implementation.

## Maçã de Adão

BASE		
Rui Daniel		
Lighting Design	+351 912 046 354 rd@512livedesign.com	
Executive Director		
Inês Le Gué		
roduction Manager	+351 928 158 327 inesleque@jonaslender.com	
		
WYG	Show Date	Print Date
RD	2024	07/Feb/24
Scale	Version	
1:40	MacaDeAdao 2024 v3	
5 of 5	Plot FRENTE	
copyright © 2024 All rights reserved. This rider or part of it may not be reproduced or used without prior authorization from the LD.		